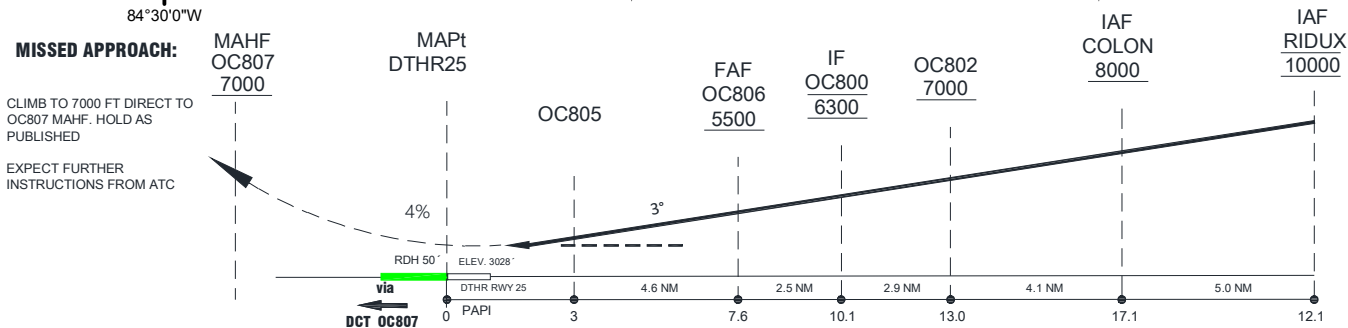
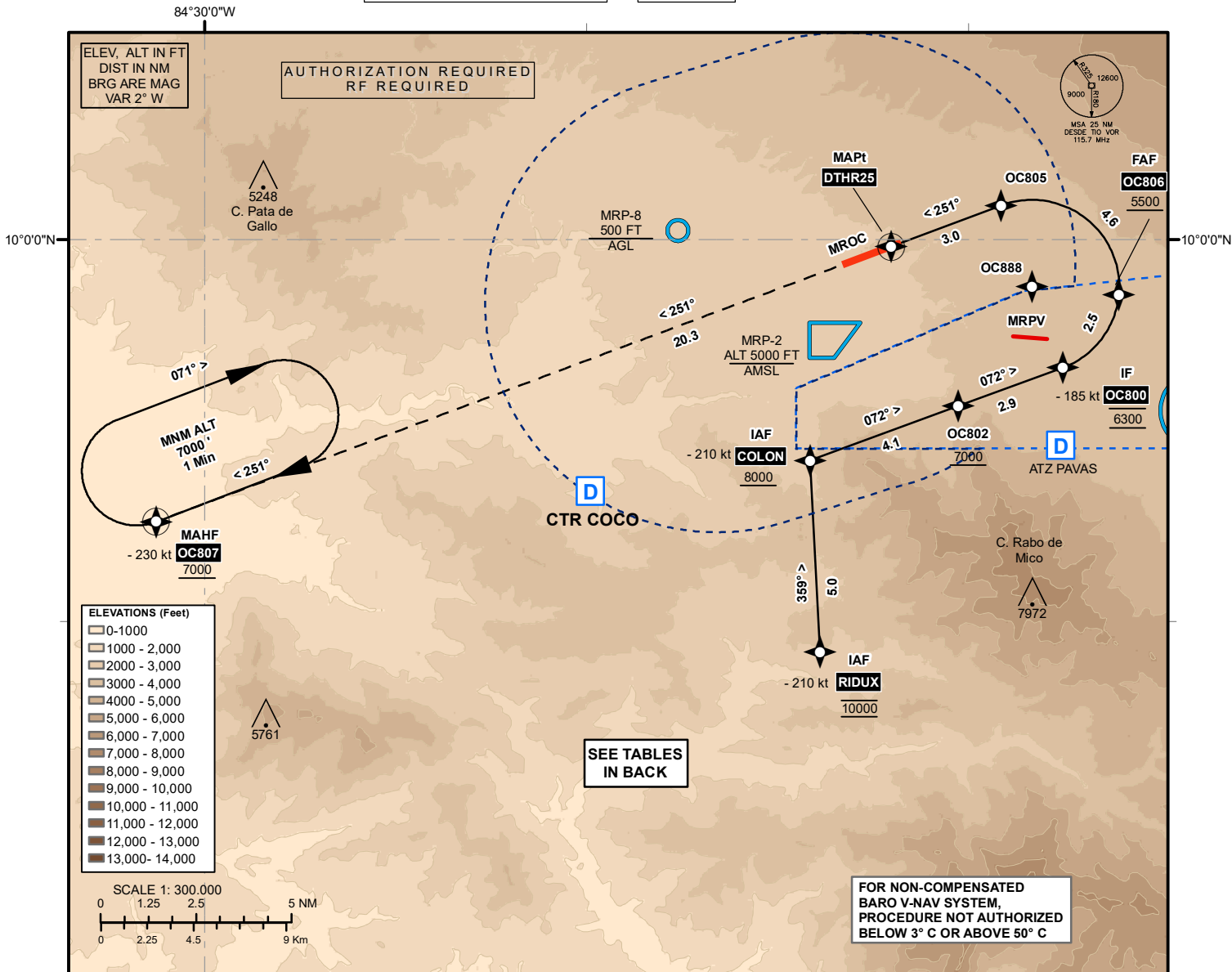


**INSTRUMENT APPROACH  
CHART**

**ALAJUELA, Intl (MROC)  
RNP W RWY 25 (AR)**

AD ELEV 3048 ft  
DTHR RWY25 ELEV 3028 ft  
T.A. 19.000 ft

ACC 119.6  
APP 120.5  
TWR 118.6



RWY 25 RNP W (AR)	CAT	A	B	C	D	CIRCLING		
	RNP 0.3 OCA/H	3570' (550')	3590' (560')	3600' (570')	3610' (580')	N/A		
	RNP 0.1 OCA/H	3340' (310')	3350' (320')	3360' (330')	3370' (340')			
Ground Speed	KT	90	100	120	140	160	180	200
VSP 5.2% (3°)	FT/MIN	478	531	637	743	849	955	1061
FAP to MAPt 7.6 NM	MIN:SEG	05:03	04:33	03:48	03:15	02:51	02:32	02:16